



Please tell me how I can make an exchange.



Contents of exchange



Whom to exchange with

Teenagers between 7-18:
from elementary, junior or senior high schools



Ways of exchange

Online exchange, Physical exchange



Contact window



IETW

Find Partner Schools Here!→TPSF

The Ministry of Education's Website
for International Education

<https://www.ietw2.edu.tw/en>
ietw2@mail.k12ea.gov.tw
886-2-27301162
886-2-27301289

International Cooperation and Foreign Guest Reception

>>> CEO's office <<<

National Tainan Chia-Chi Senior High School
ietwa1@ms2.ccsn.tn.edu.tw
886-6-213-3265#2705

Domestic and International School Exchange Matching

>>> Deputy CEO's office <<<

Chiayi County Yung Ching Senior High School
ieea@ycsh.cyc.edu.tw
886-5-3627226#220



The Ministry of Education's Primary and Secondary School International Educational Exchange Alliance



Introduction to the Alliance

Having promulgated its "Medium-Term Development Plan for International Education in Primary and Secondary Schools" in May 2023, the Ministry of Education set up in August of the same year the "Alliance of international education exchange for high schools and lower-level ones" to develop resources for international education exchange and to promote sustainable development of international education, which serves to plan, implement and match matters on international education exchange or trips to Taiwan for foreign high schools and lower-level ones.



Organization hierarchy

The Minister of Education is also the Chairperson of the Alliance, with the Deputy Minister for relevant affairs of the Ministry and the Director of K-12 Education Administration of the Ministry also serving as the Vice-Chairpersons of the Alliance. That shows Taiwan's macroscopic vision and administrative determination in promoting international education.

Meantime, high school principals with experience in promoting international affairs are appointed to serve as CEO and Deputy CEO of the Alliance; and a total of 11 regional offices (see organization chart) are established to promote the unique attractions of each county/city by sharing regional resources and linking the international education centers of the local governments to highlight the local energy for international educational exchange.



Phases of education involved

High schools and lower-level ones, including the levels of junior high and primary school(K-12), will be the mainstay, as it is hoped to allow international education to take root at early levels and to widen students' international view as well as to help them embrace an international mind.



Primary lines of promotion

Under the "Medium-Term Development Plan for International Education in Primary and Secondary Schools", the main lines of campaign is to intensify the promotion of international education curricula and to expand international education exchanges, where, based on the 12-year national education syllabus, efforts will be made to combine the United Nations' SDGs goals for sustainable development, to develop the contents and activities of international education exchange, to cultivate students' international literacy and strengthen their international competitiveness.

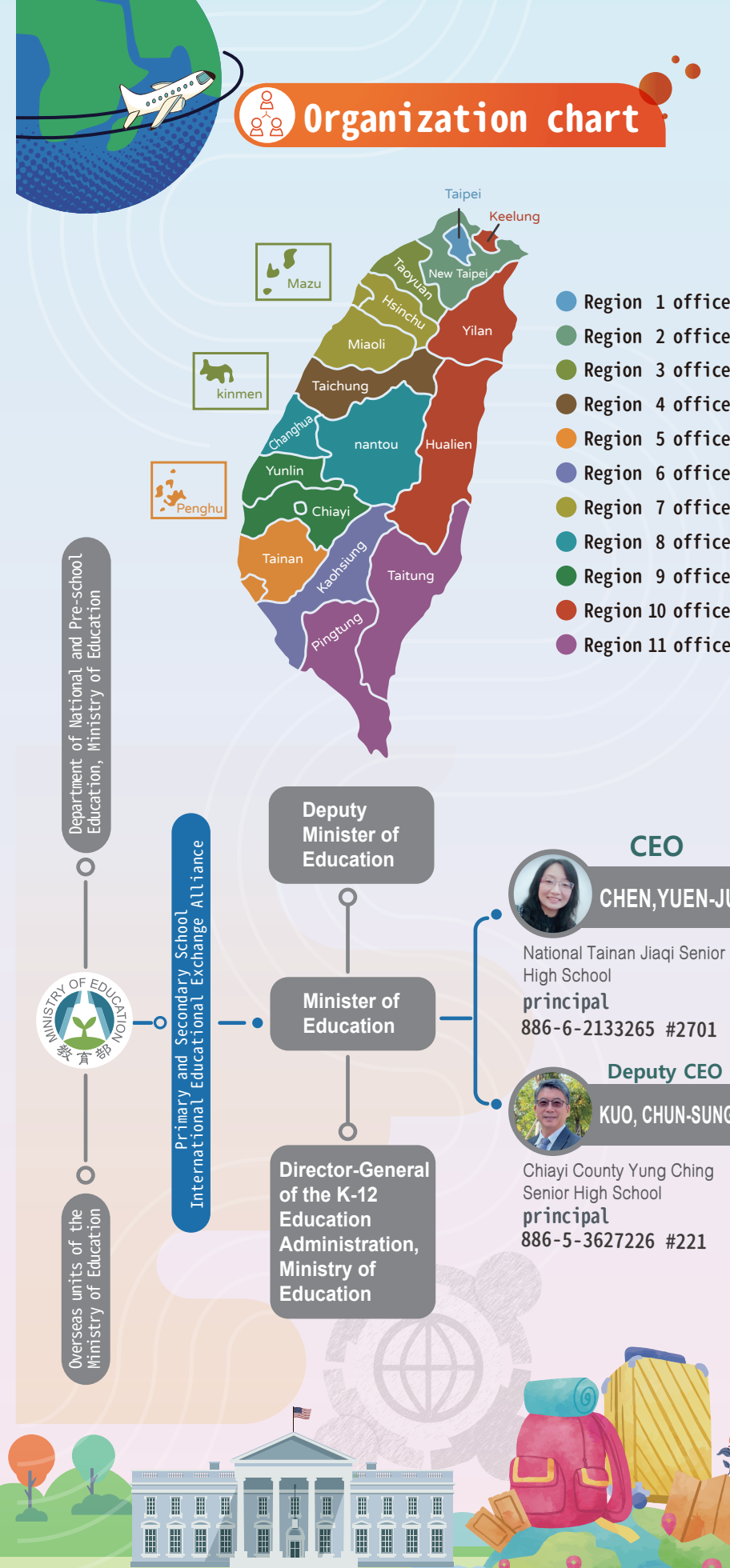
Vision of the Alliance

- ♥ The Alliance shall have a "Curriculum-based, interdisciplinary efforts, and applied to exchange" spirit, and highlight the principles of "Cross-cultural exchanges, interdisciplinary integration, cross-organizational cooperation, and cross-regional unification", rallying the regional offices and the international education centers, as well as joining local governments to plan on and administer pilot themed activities of visit.
- ♥ With the underlying international exchange curricula, our efforts will combine the concept of SDGs, incorporate the international education literacy into the syllabus, and introduce cultural and historical visits, hands-on experiences and guided tours of industrial development in various places; also, to provide empowering workshops at schools of various levels to build capacity for receiving foreign schools of all levels and for international exchanges.
- ♥ We will showcase the cooperative models between the schools of various levels, the local governments and the central agencies, linking them into a network to work together on promoting international education.
- ♥ Through the regional offices within the Alliance as a connecting platform, horizontally linking local governments and international education centers in each county and city, we aim to strengthen international exchange and interaction among schools at the senior high school level and below.

Tasks of the Alliance

- 📖 Review the annual work plans of international educational exchange.
- 📖 Increase international educational exchanges for Taiwan's high schools and lower-level ones.
- 📖 Serve as the main contact window for international educational exchanges for Taiwan's high schools and lower-level ones.
- 📖 Arrange and coordinate foreigners to come to Taiwan for international educational exchanges with high schools and lower-level ones.
- 📖 Send selected persons to attend matters on international educational exchanges overseas.

Organization chart



Directors of various offices School principal

- Director, Region 1 office**
YANG, YI-CHYANG
Taipei City
Taipei Municipal Daan Vocational High School
principal 886-2-27091630 #1001
- Director, Region 2 office**
LIU, SHU-FEN
New Taipei City
New Taipei Municipal Banqiao Senior High School
principal 886-2-29602500 #100
- Director, Region 3 office**
SU, HUNG-MING
Taoyuan City, Kinmen County, Lienchiang County
Taoyuan Municipal Nei-Li Senior High School
principal 886-3-4528080 #201
- Director, Region 4 office**
CHEN, JIANN-MING
Taichung City
Taichung Municipal Hui-Wen High School
principal 886-4-22503928 #700
- Director, Region 5 office**
HUNG, SZU-NUNG
Tainan City, Penghu County
National Tseng-Wen Vocational High School of Home Economics and Commerce
principal 886-6-5722079 #100
- Director, Region 6 office**
CHENG, WEN-YI
Kaohsiung City
Kaohsiung Municipal Kaohsiung Girls' Senior High School
principal 886-7-2115418 #100
- Director, Region 7 office**
LIU, HSIAO-WEN
Hsinchu County, Hsinchu City, Miaoli County
National Chunan Senior High School
principal 886-37-476855 #300
- Director, Region 8 office**
LEE, MING-CHAO
Changhua County, Nantou County
National Sihu Senior High School
principal 886-4-8826436 #3101
- Director, Region 9 office**
CHEN, JUI-CHOU
Yunlin County, Chiayi County, Chiayi City
National Chia-Yi Industrial Vocational High School
principal 886-5-2763060 #1001
- Director, Region 10 office**
HUNG, CHUNG-HSIEN
Keelung City, Yilan County, Hualien County
National Lotung Industrial Vocational High School
principal 886-3-9514196 #101
- Director, Region 11 office**
WANG, YING
Pingtung County, Taitung County
National Taitung Girls' Senior High School
principal 886-89-321268 #201

Photos of real works

