



**Academic  
Excellence  
Intertwined  
with a Plethora  
of Co-Curricular  
Activities**



**DELHI PUBLIC SCHOOL**  
**KAMPTEE ROAD & MIHAN**  
**NAGPUR**

**Prospectus** 

## Message from the Chairman



I am happy to know that DPS MIHAN Nagpur will shortly publish the school prospectus for the session 2022-23. I trust this School will become as good as all other Delhi Public Schools. The School prospectus will enable the stakeholders to make an informed decision regarding admission of their wards in the school.

It is nice to know that DPS MIHAN Nagpur is updating its website.

My best wishes to all in their endeavor to bring out the school prospectus and new website.

**V. K. Shunglu**

Chairman

The Delhi Public  
School Society

### OUR MOTTO

Service Before Self

### MISSION

To promote individualistic learning by providing ample opportunities and a safe, congenial environment to students, so that they acquire the requisite life-skills and knowledge to become successful responsible global citizens.



## About DPS – Showcasing a Tradition of Educational Excellence

Delhi Public School Kamptee Road and MIHAN, Nagpur under the aegis of the Delhi Public School Society, demonstrates a pure fusion of 'Eminence and Excellence'. With a decade long legacy, the school is elevating the standards of holistic development for each and every student while steadily changing the face of education in Nagpur. Apart from imparting life-skills oriented education backed by social-emotional curriculum, it is the school's culture of inculcating a 'Green' attitude that elevates the brand name thereby setting high benchmarks within the educational arena in India.



## Message from the Pro Vice Chairperson & President



**'You've got to find what you love...'**

said the charismatic entrepreneur Steve Jobs during his commencement speech at Stanford University.

These very simple words hold profound wisdom and have always stayed with me. So while I continue to respond to my inner calling, I feel compelled to help my ever-growing community of students at Delhi Public School Kamptee Road and MIHAN, Nagpur discover their own.

Jobs spoke vividly about following curiosity and intuition but I believe none would serve their rightful purpose unless one is truly awakened. The awakening begins when we have someone we can count on to prepare us for this extraordinary journey called life.

We need a mentor who can help us do little things with great passion while realizing the greatness in simple, everyday experiences.

Our schools at DPS Kamptee Road and MIHAN are brimming with invaluable contributions of such mentors who are helping us open the doors of opportunity to students of diverse needs and backgrounds. They help our students think, dream, and achieve. They help them follow their inner voice to lead them towards great discoveries and infinite success.

Our myriad educational endeavours and programmes, therefore, are an eclectic blend of art, science, culture and academics.

Our focus is not merely on creating academic stalwarts but on building role models for the future. We acknowledge our role and responsibility in this mission.

While guiding our students with the right vision and values, we give, create opportunities and provide them with appropriate platforms so that they can self-evaluate and reinvent themselves until they discover their passion and areas of interest and once they find that sweet spot, we strive to provide them with the necessary knowledge and vocations to turn ideas into action.

We take pride in our unique learning environment and our very accomplished network of educators, innovators and facilitators who play a critical role in leading our students towards a better future.

We encourage student-driven initiatives beyond the classroom to create and nurture a perfect model of collaboration and engagement around activities poised to help the society at large.

While enabling a unique academic and personal experience to support diverse career interests, we inspire them to look within and ask who they truly want to be?

We seek your support in transforming their capabilities to help them break stereotypes and smash the glass ceiling and nurture them towards discovering the best versions of themselves and well rounded individuals exuding confidence and compassion.

Come, be a part of this highly inclusive ecosystem carefully nurtured with ideals, perspectives, and world-class education. Together, we can shape it.

**Ms. Tulika Kedia**

Pro-Vice Chairperson  
Delhi Public School,  
Kamptee Road & MIHAN, Nagpur



**DPS Kamptee Road, Nagpur**



## **Infrastructure that Stands as our Backbone**

A lush green, naturalistic, peaceful and protected land sprawling across 15 acres at the Kamptee Road campus and 12 acres at the MIHAN campus stands as the backbone of the schools. Moreover, the state-of-art infrastructure having well-ventilated classrooms, ergonomically designed furniture, well-stocked libraries, experiential learning studios and inspiring recreational facilities with seamless technology integration in a conducive environment adds more value to the heritage.



**DPS MIHAN, Nagpur**



**Ms. Savita Jaiswal**  
Director  
DPS Kamptee Road & DPS MIHAN  
Nagpur



**Ms. Ritu Sharma**  
Principal  
DPS Kamptee Road, Nagpur



**Ms. Nidhi Yadav**  
Principal  
DPS MIHAN, Nagpur

**T**he academic building at DPS Kamptee Road, Nagpur is meticulously divided into 5 blocks. Each block has washrooms on every floor, a ramp for determinedly abled students, a fire and emergency exit plan and fire extinguishers.

**Academic Blocks :** The academic blocks are identically structured and divided into five blocks. The classrooms are spacious, well ventilated, and vibrant with ergonomically constructed furniture keeping in mind the comfort of the students.

**Administrative Block :** The Administrative Block holds office spaces for the school's Pro Vice Chairperson, Director, Principal and Bursar. It also has a space dedicated to a spacious Conference Room equipped with latest gadgets and equipment to facilitate interactive one-on-one or virtual meetings. Additionally, the block also hosts separate office spaces for departments pertaining to Accounts, Transport, Store and the Reception.

**Co-Curricular Block:** The Co-Curricular Block consists of separate physical rooms for Dance and Music Rooms, Activity Centre , Infirmary and Art Room that are fitted with modern amenities. The star space is the one dedicated to the prestigious 'Shankar Mahadevan Academy'- a music academy founded by composer and singer Shankar Mahadevan. Since 2015, the academy continues to run an exclusive In-Campus school Programs for us in the city.

# DPS KAMP





**Sports Complex :** An action-packed space always buzzing with energy, it houses a Multi-Purpose Hall for indoor games, natatorium (indoor swimming pool), synthetic basketball court, skating rink, hockey, cricket, football ground and athletic tracks.

**Libraries, Resource Centre and Laboratories :** Our Junior and Senior Library is the home to around 20000 books. There is a cosy 'Reading Corner' for the students along with a Resource Centre for students and staff members to indulge in knowledge enhancement. Interestingly it contains research led resource books by varied eminent authors across specialised topics. The Montessori Play-way houses an extensive line of educational toys, puppets, hard board, felt books, touch and feel books, musical books and pop-up books for our little budding explorers.

We also have an array of domain specific laboratories for Science, Computers, Social Studies, Commerce and Math with the most innovative state of the art equipment backed by advanced technologies. These are aligned to the rapid pace of educational transformation that India is currently witnessing.

**Canteen and Emergency Tuck shop :** The Canteen serves healthy food including baked dishes and fresh cuisine to encourage wholesome eating habits amongst the students. The Emergency Tuck Shop offers the students an opportunity to buy school supplies and other necessary items.

# TEEROAD



The infrastructure at DPS MIHAN, Nagpur is a seamless synchronization of 'Academics, Arts and Sports'. The campus 12 acres of land is solicitously divided into the following:

**Academic Blocks :** Magnificent infrastructure equipped with the state of the art classrooms, laboratories and libraries with a rich repertoire of 11000 books, together raise the bar of educational excellence across all dimensions.

**Artist's Village :** One-of-its-kind recreational centre to pursue arts in all its forms including Music, Art and Dance, while showcasing a cultural repertoire of wholesome education with pride and honour.

**Sports Complex :** An astonishing 7 acres of land for sports activities like Table Tennis, Chess, Basket Ball, Cricket, Football, Kho-Kho, and Volley Ball to instil social and behavioural learning along with physical fitness.

**Pertinent Additions at DPS MIHAN, Nagpur Campus include :**

- ▶ A 250-metre standard mud track and 2 long jump pits
- ▶ Generator backup to tackle electrical emergencies
- ▶ 24x7 CCTV surveillance for assured safety and security

# DPS MIHAN



**Sports Rotation** : A unique rotational system that exposes students to the depths and breaths of a plethora of sports. It gives them the advantage of staying at the top across all dimensions of sports education.

**A Space to Experience Reflections and Vibrations** : The co-curricular block is an artistically designed creative zone that brings to life the uniqueness of dance and music in their respective aura and melody. Forever buzzing with vibrant steps and voices, this spacious block is where our students start their journey of discovering the magic of sound and where they unwind and understand the aesthetics of movement.

The dance curriculum followed by us embraces movement, choreography as well as an understanding and appreciation of folk, classical and contemporary dance.

While the wooden floored dance rooms act as an ideal platform for our students to immerse themselves in the magical flow of varied dance forms, the Music rooms are a soothing space which bring together melody and rhythm in all its avatar. One cannot miss listening to the passionate jamming sessions by 'Cosmic Rhythm' the Kamptee Road school band. Not to forget our award-winning School Choir, our ensemble that continues to delight everyone with their amazing performances. The new entrant on the block, the MIHAN school band 'Melody Explorers' is steadily evolving with its band members who can be regularly seen jamming in the open-air theatre of our beautiful Artist Village.



# THE WAY OF LIFE AT DPS



DPS Kamptee Road, Nagpur



DPS MIHAN, Nagpur



Well Stocked Junior Library



Well Stocked Resource Center



Indoor Swimming Pool



Fun & Learn at every step

# THE WAY OF LIFE AT DPS



**Indoor Play Area**



**Psychomotor Development**



**DPS MIHAN, Reception Area**



**DPS MIHAN, Artist Village**



**Morning Assembly**



**Well Equipped Labs**



**Activity in Physics Labs**



**Spacious & Airy School Building**



## Curriculum that Strengthens the Heritage of Education

DPS Kamptee Road and MIHAN, Nagpur are affiliated with the Central Board of Secondary Education (CBSE) that defines the diversity of the Indian Education System across cultures and geographical locations. The curriculum is an intersection of academic and non-academic skills integrated with a streamlined set of core values and components that assures:

- ▶ Quality based education to one and all within a standard set of parameters.
- ▶ A holistic approach to teaching and learning that caters to all facets of human development.
- ▶ Enriching the curriculum to disseminate knowledge within and outside the campus.
- ▶ Honing creative skills and talents while giving space to discover, explore and fly.
- ▶ Nurturing the future today to create industry-ready professionals.





## An Environment that Supports Special Educational Needs

Special Educational Needs (SEN) facilitates learning across 3D's defining 'Disabilities, Difficulties and Disadvantages'. It is a matter of pride that DPS Kamptee Road and MIHAN, Nagpur are amongst the few schools in the city to have a mindful infrastructure and teaching approach that supports all parameters of SEN.

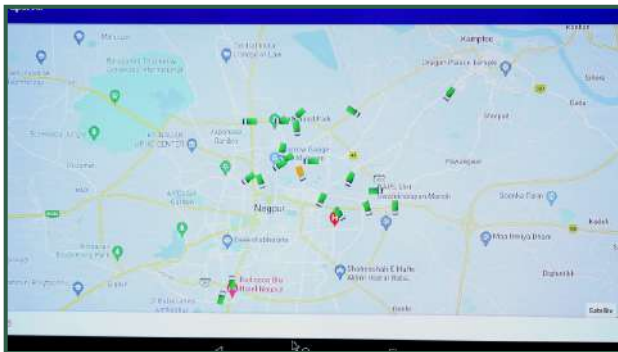
## Green School that Stimulates Sustainable Growth

DPS Kamptee Road and MIHAN, Nagpur are the most exemplary Green Schools in the Zero-Mile city of India, committed to creating a sustainable community of responsible citizens. The key highlights of the Green Campus include:

- ▶ Reverse Osmosis (RO) Water Purifying plants across each block to value the health and hygiene of everyone within the campus
- ▶ Utilising recycled water from the recycling plant to optimally utilise and save the vital commodity called 'Water'
- ▶ The lush green premises at DPS Kamptee Road and MIHAN, Nagpur houses numerous native and exotic plants in addition to having varied native and migratory birds as frequent guests
- ▶ The plastic-free zone adds to the essence of being one of the best environment-friendly schools in India

# Transportation System that Drives Education to Every Nook and Corner

An impeccable transportation system with a fleet of GPS enabled school buses traverse through and cover every nook and corner of the city. Each bus abides by the government defined transport guidelines with an assurance to provide a high level of safety and security to all availing the facility.





# ANNUAL EVENTS

## Investiture Ceremony

The Investiture Ceremony is a milestone event at DPS Kamptee Road and MIHAN, Nagpur. Celebrated with great zeal and zest, the annual event signifies the reliance and confidence the schools see in its students as they take on the mantle of leadership.



## Annual Day Programme

The pomp and show of the Annual Day Festival is all about new learnings, pleasant moments and passionate moves. Based on a novel theme every year, it reflects the undying passion and devotion of the students as they take a short yet meaningful journey from conceptualizing to the execution of the recital, musicale or theatre production.



## Annual Sports Week

The Inter-School Annual Sports Week organized by DPS Kamptee Road and MIHAN, Nagpur is all about 'Diversity and Vastness' with different schools competing for the coveted trophy. It offers a dynamic platform for students to unleash their hidden talents and showcase it on a competitive ground.



## Annual Fete

The annual fete at DPS Kamptee Road and MIHAN, Nagpur is synonymous with extravaganza! The carnival exhibits an assortment of mouth-watering delicacies and creative games packed with fun moments and lots of surprises. Innovative concepts, novel themes and exciting activities add a distinctive uniqueness to the fete every year.



# DPS Students escorting the Indian Cricket team at ICC T 20 World Cup





## Music & Dance

The co-curricular block is decked with classical and contemporary dance and music rooms. Dance rooms are fitted with front and side mirrors and wooden flooring.

## Cosmic Rhythm

### School Band

Our very own School Band called 'Cosmic Rhythm' makes waves wherever it performs. It has been adjudged as one of the best school bands in Nagpur.

### School Choir

The School Choir is yet another gem in the DPS Nagpur headdress. It has performed in innumerable concerts and functions and has won accolades.



*Sm* SHANKAR  
MAHADEVAN  
ACADEMY



# EVEN THE WALLS OF DPS TEACH



# CANVAS OF CREATIVITY



# THE WAY OF LIFE AT DPS



Adventure Camp



Art Exhibition



Best Out of Waste



DSO Athletic

# THE WAY OF LIFE AT DPS



**Art Competition**



**Art Function**



**Basant Mela**



**Book Farewell**



**Annual Day**





## Co-Curricular Education

### Educational Trips

DPS Kamptee Road, Nagpur is the pioneer school to host educational tours within and outside the city for students from Grade IV onwards and now it is a much-awaited activity at DPS MIHAN as well. The tours create opportunities to gain valuable insights and learning outside the classroom and beyond the textbooks.



### Life Skills Education and Conflict Management

Academic excellence without real-life skills is like designing a rocket without understanding how to launch it into space. Manners, values, attitudes, behaviour and life skills are integral to holistic education at DPS Kamptee Road and MIHAN, Nagpur. It helps students in understanding different facets of emotions, the importance of self and social awareness, understanding the need and ways of responsible decision making and experience relationship skills. Nurturing amidst such an environment further prepares the students to embrace or transform anything and everything that life may throw at them today or in times ahead.



### Babies Night Out

It is a unique annual tradition for the tiny tots from Preschool to Grade III that gives them their first exposure towards feeling independent (in a secured environment). The vibrant night is all about fun, excitement, thrill and themes to deliver a unique experience to the beauty and innocence of childhood moments.



## Clubs at DPS Nagpur

Clubs at DPS Kamptee Road and MIHAN, Nagpur cover different arenas of co-curricular activities thoughtfully categorized into literary, creative, science, sports, music, dance and nature. These with all their dynamism and uniqueness instil joyful learning into holistic education.

## Yoga & Meditation

Yoga and meditation as a tradition of uniting the mind, body and soul has been consciously embraced and adopted at DPS Kamptee Road and MIHAN, Nagpur. Brain yoga, breathing exercises and other yoga postures during the daily morning sessions bring forth an effective route to rejuvenate young minds and help them kick-start their day with mindfulness.

## Teacher Welfare and Development

Educational training programmes are held to exchange cultural and intellectual experiences while fostering an environment where learning is not just a prerogative of the students but also of the school's faculty. The school has a vast pool of experienced teachers and mentors who collaboratively create the appropriate dynamics for wholesome learning, irrespective of culture, background and inclination.

## Internationalism

DPS Kamptee Road and MIHAN, Nagpur aim at building responsible global citizens who are well-acquainted with local and global concerns. It is like imparting international standards of education while helping the students stay rooted to their grounds.



# LIFE AT DPS IS FILLED WITH EXPERIENTIAL LEARNING



## DEAR Time

DPS Kamptee Road and MIHAN, Nagpur employ creative and innovative techniques to build character and inspire by example. The schools practice a 'DEAR Time' tradition, that translates into 'Drop Everything And Read Time'. At one particular time, all the students are encouraged to let go off all other activities and immerse into a quiet book reading session. This exercise aims at propagating and rekindling the habit of silent reading in students and teachers alike.

## Career Counselling Sessions

The highly active Career Counselling Cell at DPS Kamptee Road and MIHAN, Nagpur consistently inspires the students to kickstart their career journey with defined courses and objectives. With a deep understanding of human nature and market trends in the era of rapid change, the Cell works as a catalyst to transform all dreams into realities.

## Community Service

'Service Before Self' defines the core of DPS Kamptee Road and MIHAN, Nagpur. The students are encouraged to give back to the society in various possible ways. As part of this initiative, the school organises visits to orphanages and old age homes amongst other socially driven activities as a regular effort.

## Parental Involvement

The role and involvement of parents is indispensable be it for the academic, social or emotional development of a child. We frequently host Parent-School Interactive Programmes. Our parents are a resource pool who work closely with the school's faculty in co-conducting workshops orienting new parents and students on various topics.

## Basking in the Glory

The space here defines the milestones that strengthen our journey to excellence.



## DPS Kamptee Road, Nagpur

- 🏆 Awarded the British Council Award by India Dimensions in Schools (2020- 2023)
- 🏆 Ranked No.1 school in the city for 3 consecutive years by Education World, India's top education website for educators, parents and students (2019 - 2021)
- 🏆 Bagged the Jury Award for Multi Sports Culture pan India by Education World(2019)
- 🏆 Bagged the Global Education Award presented by ScooNews for Phenomenal Implementation in Teaching Pedagogy (2019)
- 🏆 Awarded the School Excellence Award for enriching the standards in imparting excellence in education to the gennext learners by Brainfeed Magazine (2019)
- 🏆 Received the Duke of Edinburgh's International Award for Young People (2019)
- 🏆 Ranked No.1 top CBSE schools in India for Academic Reputation by Education Today (2018)
- 🏆 Bagged the Best Sports School Award by Sports Journalist Association Nagpur (2016-2017)
- 🏆 Bagged the award for the 2nd best school in Nagpur for four consecutive years by Education World (2015 -2018)

## DPS MIHAN, Nagpur

- 🏆 Recognised and awarded as the Emerging High Potential School by Education World (2021-22)
- 🏆 Our Pro Vice Chairperson and President, Ms. Tulika Kedia awarded with the Exemplary Covid-19 Eduleader by Education World, India's top education website for educators, parents and students (2021- 2022)
- 🏆 Awarded with the Climate Action Project School of Excellence by Cartoon Network and Climate Action Project (2021-22)
- 🏆 Ranked as the 4th best school in Nagpur by Education World (2021 - 2022)
- 🏆 Bagged the Maharashtra School Merit Award (2019- 2020)
- 🏆 Bagged the Paryavaran Rakshak Award by Griha Council (2019-2020)
- 🏆 Awarded as the Best School in Nagpur for Co-Curricular Education by Education Today (2019 - 2020)
- 🏆 Honoured with the Green Olympiad Certificate for an endeavour to promote environment stewardship at school level by The Energy and Resources Institute (2018- 2019)
- 🏆 Bestowed with the School Excellence Awards by Brainfeed magazine in multiple categories namely, the Best CBSE School, Safety and Security, Emergent, Techno Smart School for attaining excellence in growth and enhancement of school Education prioritizing the 21st century demands of future (2018-2019)



'Journey to Excellence Continues with the Undying Passion for Empowering Education.'



# TERMS AND CONDITIONS

## 1. Registration/Admission Procedures and Rules

- 1.1. Parents are requested to carefully fill the forms and submit them to the school office before the specified period.
- 1.2. Incomplete or illegible forms without photographs will not be accepted.
- 1.3. Original Birth Certificate issued by Municipal Corporation must be submitted at the time of admission with the form for class Pre Nursery / Nursery/ Preparatory/Grade I. Photocopy of report card of the last exam passed must be attached for Grade 1 and above. Transfer Certificate in original has to be submitted at the time of admission for Grade II and above.
- 1.4. Age for admission to Pre Nursery is 3 years as on 30th December in the academic session in which admission is taken. Age should be correctly specified in the forms.
  - a) Candidates who are selected must pay the fee by the dates indicated; otherwise, admission will automatically stand cancelled.
  - b) The child will be issued the Student Identity Card after all admission formalities are completed.
  - c) Parents are to report to the reception counter on the dates specified along with the student wearing his/her I Card. The ward will not be allowed to attend classes if the Identity Card is not produced.
  - d) Students have to come in school uniform along with books and stationery as prescribed by the school.

## 2. Procedure For Fee Payment

2.1 Fee is payable in quarters. It is to be paid as per schedule.

Quarter	1 <sup>st</sup> Quarter	2 <sup>nd</sup> Quarter	3 <sup>rd</sup> Quarter	4 <sup>th</sup> Quarter
	July, Aug. & Sept.	Oct., Nov. & Dec.	Jan., Feb. & March	April, May & Jun
Period of Payment	1 <sup>st</sup> July to 10 <sup>th</sup> July	1 <sup>st</sup> Oct. to 10 <sup>th</sup> Oct.	1 <sup>st</sup> Jan. to 10 <sup>th</sup> Jan.	1 <sup>st</sup> Apr. to 10 <sup>th</sup> Apr.
For Pre Nursery to Grade VII	Term Fee + Fee for 1 <sup>st</sup> Quarter	Term Fee + Fee for 2 <sup>nd</sup> Quarter	Term Fee + Fee for 3 <sup>rd</sup> Quarter	Term Fee + Fee for 4 <sup>th</sup> Quarter
For Grades VIII to XII	Term Fee + Fee for 1 <sup>st</sup> Quarter	Term Fee + Fee for 2 <sup>nd</sup> Quarter	Term Fee + Fee for 3 <sup>rd</sup> Quarter	NA
Dates for Late Payment of fee with additional charges of 100/-	11 <sup>th</sup> July to 14 <sup>th</sup> July	11 <sup>th</sup> Oct. to 14 <sup>th</sup> Oct.	11 <sup>th</sup> Jan. to 14 <sup>th</sup> Jan.	11 <sup>th</sup> Apr. to 14 <sup>th</sup> Apr.
Dates for Late Payment of fee with additional charges of 500/-	15 <sup>th</sup> July to 24 <sup>th</sup> July	15 <sup>th</sup> Oct. to 24 <sup>th</sup> Oct.	15 <sup>th</sup> Jan. to 24 <sup>th</sup> Jan.	15 <sup>th</sup> Apr. to 24 <sup>th</sup> Apr.
Dates for Late Payment of fee with additional charges of 1000/-	25 <sup>th</sup> July to 10 <sup>th</sup> August	25 <sup>th</sup> Oct. to 10 <sup>th</sup> Nov.	25 <sup>th</sup> Jan. to 10 <sup>th</sup> Feb.	25 <sup>th</sup> Apr. to 10 <sup>th</sup> May
Dates for Late Payment of fee with additional charges of 1500/-	11 <sup>th</sup> August onwards	11 <sup>th</sup> Nov. onwards	11 <sup>th</sup> Feb. onwards	11 <sup>th</sup> May onwards

2.1 Non-payment of school tuition fee for one term will automatically strike off the child's admission. New admission will have to be sought on payment of the re-admission fee only.

2.3 Fee can be remitted in the school office between 9:00 a.m. to 2:00 p.m. on all working days.

**A)** For payment to DPS Kamptee Road, Nagpur Branch Cheque to be drawn in favour of Delhi Public School, Kamptee Road, Nagpur.

**B)** For payment to DPS MIHAN, Nagpur Branch Cheque to be drawn in favour of Delhi Public School, MIHAN, Nagpur.

Outstation or post-dated cheques will not be accepted. Cheque can be sent through the child along with a note in the almanac. Admission number and Telephone number should be mentioned overleaf. **Cash should not be sent through the child.**

**NOTE:**

1. Fee once paid is NOT refundable for any reasons whatsoever.
2. 1st Quarter fee should be paid at the beginning of the session.
3. All formalities to be cleared before the declaration of the result.
4. For Grades VIII, IX, X and XII one quarter advance fee is applicable in April and this fee will be adjusted in the last quarter.

**3. Withdrawal Rules**

- 3.1 Application for withdrawal is to be made on a prescribed proforma available in the school office. No child can be withdrawn till a written request from parents is put up. A one month notice period or one month notice fee is required for withdrawal.
- 3.2 Transfer Certificate will be issued after 10 working days from receiving the application and clearance of all dues.

**4. Transport****(1) Criteria :**

- 1) Taking into account safety and security reasons, the bus shall not negotiate areas below the given criteria.
  - a) Narrow roads / By lane
  - b) Market or crowded area
  - c) Bus shall not make U-turns, reverse or go into one way.

**Bus Rules**

- 1) Transportation facility is granted for one entire session. In case transport is withdrawn during mid-session, parents shall pay the transport fee for the whole session.
- 2) Parents /guardians should not enter the bus.
- 3) It will be the sole responsibility of the parents to escort the pupil to and from the fixed bus stop. The bus facility is extended at the sole risk and responsibility of the parents.
- 4) Any suggestions or complaints should be reported to the transport incharge. Parents are expected to treat the bus staff courteously. Do not give instructions to bus staff, driver or conductor.
- 5) The bus shall stop at the pre-decided stops only for picking up children.
- 6) Those who are late will miss the bus at their own risk. The buses will be plying as per the scheduled time. No delay shall be considered.
- 7) For security reasons, students who miss the bus from the assigned stop will not be picked up from any other stop.
- 8) If a parent/guardian is not present at the bus stop to pick up the child while being dropped back, the child will be driven back to the school.
- 9) Please do not stop the school bus at an unauthorized stop nor overtake the bus to enable your ward to board the bus, as this would compromise the safety of other children boarded in the bus.

**5. Medical Facility**

- 5.1 The school has a well-equipped First-Aid facility.
- 5.2 In case of any medical emergency, the child shall be taken to a nearby hospital.
- 5.3 The school is indemnified for an injury suffered by a child. No reimbursement of charges would be made towards any medical treatment.

**6. Uniform**

Children are to wear summer uniform from April to October and winter uniform from November to March.









**Scan Code for online enquiry  
form - DPS Kamptee Road, Nagpur**



<https://bit.ly/dpsnagpur>

DELHI PUBLIC SCHOOL

MIHAN

MORNING ASSEMBLY



DELHI PUBLIC SCHOOL



Scan Code for online enquiry  
form - DPS MIHAN, Nagpur



<https://bit.ly/dpsmihan>



**DPS KAMPTEE ROAD, NAGPUR**



**DPS MIHAN, NAGPUR**

**DPS KAMPTEE ROAD, NAGPUR**

Opp. 11 Kms. Milestone, P.O. Khairi,  
Kamptee Road, Nagpur - 440026.  
E-mail : [info@dpsnagpur.com](mailto:info@dpsnagpur.com), [contact@dpsnagpur.com](mailto:contact@dpsnagpur.com)  
Ph. No. 9607588882, 9607228882

**DPS MIHAN, NAGPUR**

Opp. IIM & AIIMS  
MIHAN Wardha Road, Nagpur - 441108.  
E-mail : [info@dpsmihan.com](mailto:info@dpsmihan.com)  
Ph. No. 9607855441, 9607855442